



# DAJA












大甲永和

DAJA-UHP-10-2.0

## Micro Butt-Welding Fittings



# Contents

Description	Page
<b>Technical Specification and designation</b>	01
<b>Demonstration of Part Number</b>	02
<b>How to Order A Part</b>	03
<b>Mini Butt Weld Fittings</b>	04
 (MR) Micro Reducer.....04	 (MRT) Micro Reducing Tee.....06
 (ME) Micro Elbow.....05	 (MC) Micro Cross .....07
 (MRE) Micro Reducing Elbow.....05	 (MTE) Micro Tri-Elbow.....07
 (MT) Micro Tee.....06	
<b>Long Butt Weld Fittings</b>	08
 (MLE) Micro Long Elbow .....08	 (MLT) Micro Long Tee.....09
 (MLR) Micro Long Reducer .....09	 (MLRT) Micro Long R-Tee .....10

# Technical Specification

## Material Designation

Designator	Material	Specification
D	316L VIM+VAR Stainless Steel	Bar stock meets the standard of ASTM A479, ASME SA479, ASTM A276. Forged body meets the standard of ASTM A182, ASME SA182, ASTM A314.
S	316L VAR or VOD Stainless Steel	
L	316L Stainless Steel	

## Surface Roughness Designation (Wetted Area)

Designator	Process Description	Specification
E	EP, electro-polishing	Ra5µin (Ra0.13µm)
B	BA, mechanical polishing	Ra10µin (Ra0.25µm)

## Tubing Specifications For Micro Butt-Welding Fittings

OD (inch)	OD (mm)	Wall Thickness		Manufacturing Standard
		*J	*A	
1/4"	6.35	1.0	0.89	JIS G3459/ASTM standard (A270, A269)
3/8"	9.53	1.0	0.89	JIS G3459/ASTM standard (A270, A269)
1/2"	12.70	1.24	1.24	JIS G3459/ASTM standard (A270, A269)
3/4"	19.05	1.65	1.65	JIS G3459/ASTM standard (A270, A269)
1"	25.40	1.65	1.65	JIS G3459/ASTM standard (A270, A269)

● Note :

1. J is JIS design and specification.
2. A is American design and specification.
3. All data shown as on this catalogue is for the temperature ranging:From 20°F to 100°F (-25°C to 36°C)

## Demonstration of Part Number

Product Category	Description	Product Code	EP 5Ra Finish	BA 10Ra Finish or Mill Finish
Mini Butt Weld Fittings	Micro Reducer	MR	MR6-1/2-1/4-SE	MR6-1/2-1/4-SB
	Micro Elbow	ME	ME6-1/2-SE	ME6-1/2-SB
	Micro Tee	MT	MT6-1/2-SE	MT6-1/2-SB
	Micro Reducing Tee	MRT	MRT6-1/2-1/4-SE	MRT6-1/2-1/4-SB
	Micro Cross	MC	MC6-1/2-SE	MC6-1/2-SB
	Micro Tri-Elbow	MTE	MTE6-1/2-SE	MTE6-1/2-SB
Long Butt Weld Fittings	Micro Long Reducer	MLR	MLR-3/8-1/4-LE	MLR-3/8-1/4-LB
	Micro Long Elbow	MLE	MLE-1/4-LE	MLE-1/4-LB
	Micro Long Tee	MLT	MLT-1/4-LE	MLT-1/4-LB
	Micro Long R-Tee	MLRT	MLRT-3/8-1/4-LE	MLRT-3/8-1/4-LB

## How to Order A Part

### Example A : ME6-1/2-DE-A

<b>ME6</b>	Micro Elbow with 6.35mm orbital welding leg
<b>1/2</b>	tube end dimension is 1/2" OD
<b>DE</b>	D: 316L VIM/VAR Material, E: Electro-polishing finish, 5 Ra (Ra0.13µm)
<b>A</b>	American/Europe Standard

### Example B : MLT-1/4-LB-J

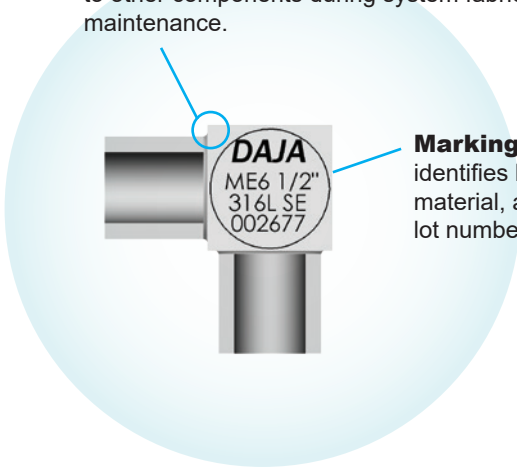
<b>MLT</b>	Micro Long Tee with 19.0mm orbital welding leg
<b>1/4</b>	tube end dimension is 1/4" OD
<b>LB</b>	316L Material, B: BA, mechanical processing finish, 10 Ra (Ra0.25µm)
<b>J</b>	JIS Standard

Description	Part No.	Sleeve Length 1	Tube Size 1 (in).	Tube Size 2 (in).	Material	Inner Surface Quality	Dimension Standard
Micro Reducer	MR6-1/2-1/4-SB	6= 6.35 mm	1/4"	1/4"	D=316L VIM/VAR	E= EP finish Ra5µin (Ra0.13µm)	A=American/ Europe Standard
Micro Elbow	ME6-3/8-SE		3/8"	3/8"			
Micro Tee	MT6-1/2-SB		1/2"	1/2"	S=316L VAR	B=BA finish, Ra10µin (Ra0.25µm)	J=JIS Standard
Micro Long Elbow	MLE-1/4-LB		3/4"	3/4"			
Micro Long Reducer	MLR-3/8-1/4-LB		1"	1"	L=316L		
Micro Long Tee	MLT-1/4-LB						

# Mini Butt Weld Fittings

1/4" (6.35mm) short orbital welding length is provided with a compact design for saving piping space.

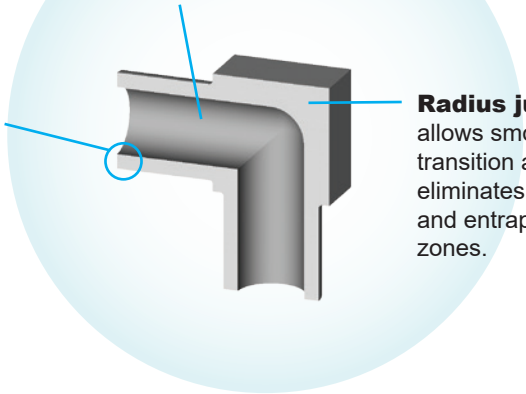
**Chamfered body block** helps prevent damage to other components during system fabrication or maintenance.



**Marking** identifies brand, type material, and production lot number (heat code tracing)

DAJA  
ME6 1/2"  
316L SE  
002677

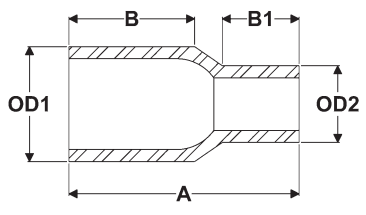
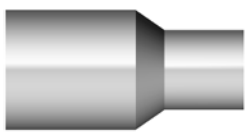
**EP Grade**, electro-polish finish with 5  $\mu$ m. (0.13  $\mu$ m) Ra surface finish plus UHP cleaning and packaging. Standard BA grade surface finish is 10  $\mu$ m. (0.25  $\mu$ m) Ra.



**Radius junction** allows smooth flow transition and eliminates pockets and entrapment zones.

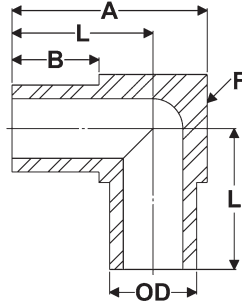
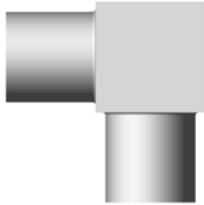
**Square, burr-free tube weld ends** enhance alignment, maintain tube wall uniformity, and promote weld repeatability.

## Micro Reducer (MR)



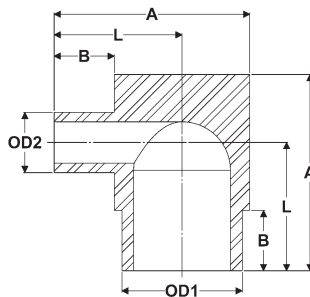
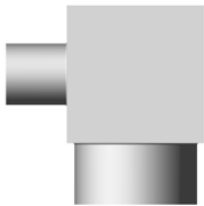
DAJA Part No.	Tube O.D.1	Tube O.D.2	Dimensions			Pressure Rating
			A	B	B <sub>1</sub>	
Dimensions, mm.						psig (bar)
MR6-3/8-1/4-XX	3/8	1/4	19.05	10.4	6.35	3300 (227)
MR6-1/2-1/4-XX	1/2	1/4	19.05	10.4	6.35	3700 (254)
MR6-1/2-3/8-XX	1/2	3/8	19.05	10.4	6.35	3300 (227)

## Micro Elbow (ME)



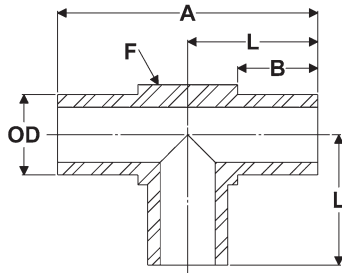
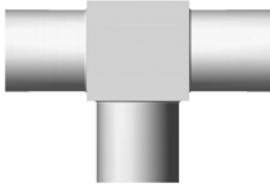
DAJA Part No.	Tube O.D	Dimensions				Pressure Rating
		A	B	F Flat	L	
Dimensions, mm.						psig (bar)
ME6-1/4-XX	1/4	14.25	6.35	7.9	10.3	5100 (351)
ME6-3/8-XX	3/8	17.45	6.35	11.1	11.9	3300 (227)
ME6-1/2-XX	1/2	20.65	6.35	14.3	13.5	3700 (254)

## Micro Reducing Elbow (MRE)



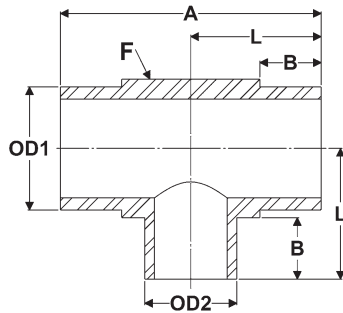
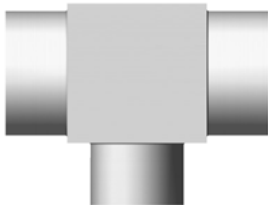
DAJA Part No.	Tube O.D.1	Tube O.D.2	Dimensions				Pressure Rating
			A	B	F Flat	L	
Dimensions, mm.							psig(bar)
MRE6-3/8-1/4-XX	3/8	1/4	17.45	6.35	11.1	11.9	3300 (227)
MRE6-1/2-1/4-XX	1/2	1/4	20.65	6.35	14.3	13.5	3700 (254)
MRE6-1/2-3/8-XX	1/2	3/8	20.65	6.35	14.3	13.5	3300 (227)

**Micro Tee (MT)**



DAJA Part No.	Tube O.D.	Dimensions				Pressure Rating
		A	B	F Flat	L	
Dimensions, mm.						psig(bar)
MT6-1/4-XX	1/4	20.6	6.35	7.9	10.3	5100 (351)
MT6-3/8-XX	3/8	23.8	6.35	11.1	11.9	3300 (227)
MT6-1/2-XX	1/2	27.0	6.35	14.3	13.5	3700 (254)

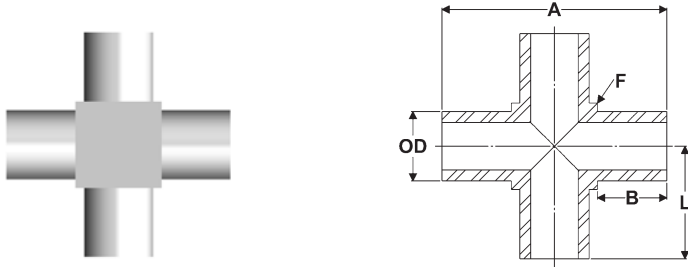
**Micro Reducing Tee (MRT)**



DAJA Part No.	Tube O.D.1	Tube O.D.2	Dimensions				Pressure Rating
			A	B	F Flat	L	
Dimensions, mm.							psig(bar)
MRT6-3/8-1/4-XX	3/8	1/4	23.8	6.35	11.1	11.9	3300 (227)
MRT6-1/2-1/4-XX	1/2	1/4	27.0	6.35	14.3	13.5	3700 (254)
MRT6-1/2-3/8-XX	1/2	3/8	27.0	6.35	14.3	13.5	3300 (227)

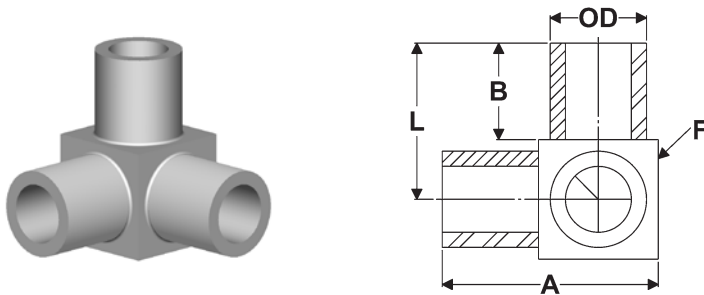


**Micro Cross (MC)**



DAJA Part No.	Tube O.D.	Dimensions				Pressure Rating
		A	B	F Flat	L	
Dimensions, mm.						psig(bar)
MC6-1/4-XX	1/4	20.6	6.35	7.9	10.3	5100 (351)
MC6-3/8-XX	3/8	23.8	6.35	11.1	11.9	3300 (227)
MC6-1/2-XX	1/2	27.0	6.35	14.3	13.5	3700 (254)

**Micro Tri-Elbow (MTE)**



DAJA Part No.	Tube O.D.	Dimensions				Pressure Rating
		A	B	F Flat	L	
Dimensions, mm.						psig(bar)
MTE6-1/4-XX	1/4	14.25	6.35	7.9	10.3	5100 (351)
MTE6-3/8-XX	3/8	17.45	6.35	11.1	11.9	3300 (227)
MTE6-1/2-XX	1/2	20.65	6.35	14.3	13.5	3700 (254)

## Long Butt Weld Fittings

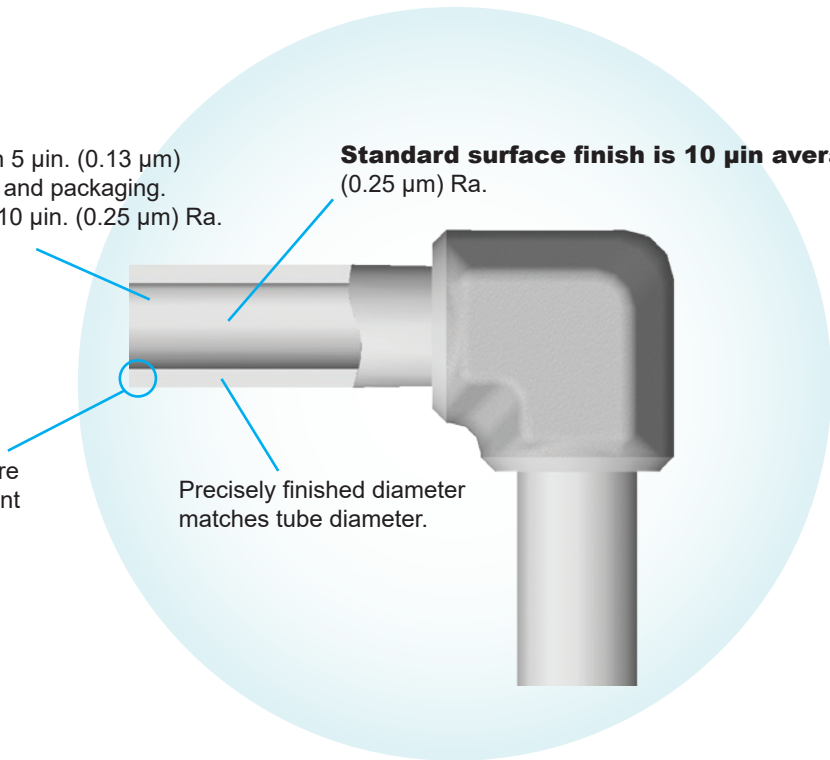
3/4" (19mm) long extended orbital welding length provides easier and quicker set-up for w/orbital welder. Forged fitting body or machined fitting body is designed with compact configuration for reducing piping weight.

**EP Grade**, electro-polish finish with 5  $\mu\text{in.}$  (0.13  $\mu\text{m}$ ) Ra surface finish plus UHP cleaning and packaging.  
Standard BA grade surface finish is 10  $\mu\text{in.}$  (0.25  $\mu\text{m}$ ) Ra.

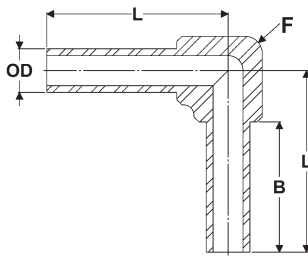
**Standard surface finish is 10  $\mu\text{in}$  average.**  
(0.25  $\mu\text{m}$ ) Ra.

Tube ends are machined with a square face and corners to enhance alignment and maintain tube wall uniformity.

Precisely finished diameter matches tube diameter.

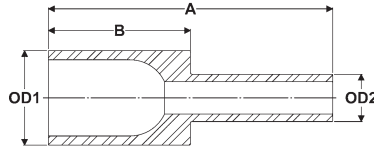
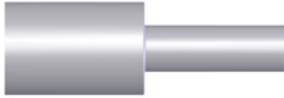


### Micro Long Elbow (MLE)



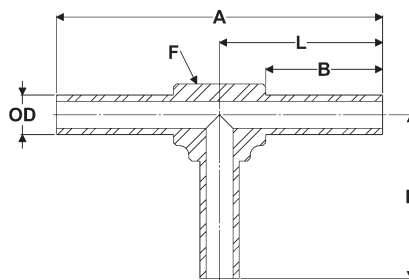
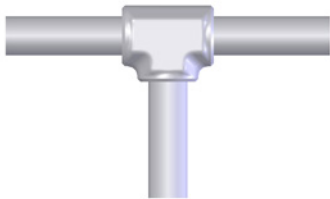
DAJA Part No.	Tube O.D.	Dimensions			Pressure Rating
		B	F Flat	L	
Dimensions, mm.					psig(bar)
MLE-1/4-XX	1/4	19	10.6	31.2	5100 (351)
MLE-3/8-XX	3/8	19	12.5	30.5	3300 (227)
MLE-1/2-XX	1/2	19	16.9	31.55	3700 (254)

### Micro Long Reducer (MLR)



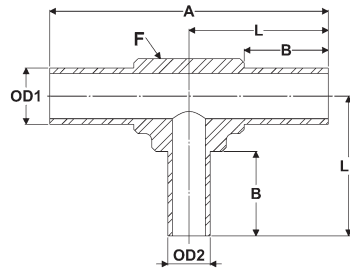
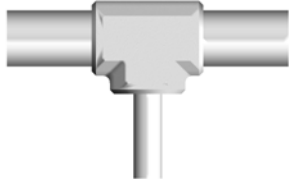
DAJA Part No.	Tube O.D.1	Tube O.D.2	Dimensions		Pressure Rating
			A	B	
Dimensions, mm.					psig(bar)
MLR-3/8-1/4-XX	3/8	1/4	38.1	19.05	3300 (227)
MLR-1/2-1/4-XX	1/2	1/4	38.1	19.05	3700 (254)
MLR-1/2-3/8-XX	1/2	3/8	38.1	19.05	3300 (227)
MLR-3/4-1/2-XX	3/4	1/2	38.1	19.05	2400 (165)
MLR-1-1/2-XX	1	1/2	38.1	19.05	2400 (165)
MLR-1-3/4-XX	1	3/4	38.1	19.05	2400 (165)

### Micro Long Tee (MLT)



DAJA Part No.	Tube O.D.	Dimensions				Pressure Rating
		A	B	F Flat	L	
Dimensions, mm.						psig(bar)
MLT-1/4-XX	1/4	62.4	19	10.6	31.2	5100 (351)
MLT-3/8-XX	3/8	61.0	19	12.5	30.5	3300 (227)
MLT-1/2-XX	1/2	63.1	19	16.9	31.55	3700 (254)

Micro Long R-Tee (MLRT)



DAJA Part No.	Tube O.D.1	Tube O.D.2	Dimensions					Pressure Rating
			A	B	F Flat	L	L <sub>1</sub>	
Dimensions, mm.								psig(bar)
MLRT-3/8-1/4-XX	3/8	1/4	61.0	19	12.5	30.5	31.2	3300 (227)
MLRT-1/2- 1/4-XX	1/2	1/4	63.1	19	16.9	31.55	31.55	3700 (254)
MLRT-1/2- 3/8-XX	1/2	3/8	63.1	19	16.9	31.55	31.55	3300 (227)

# DAJA

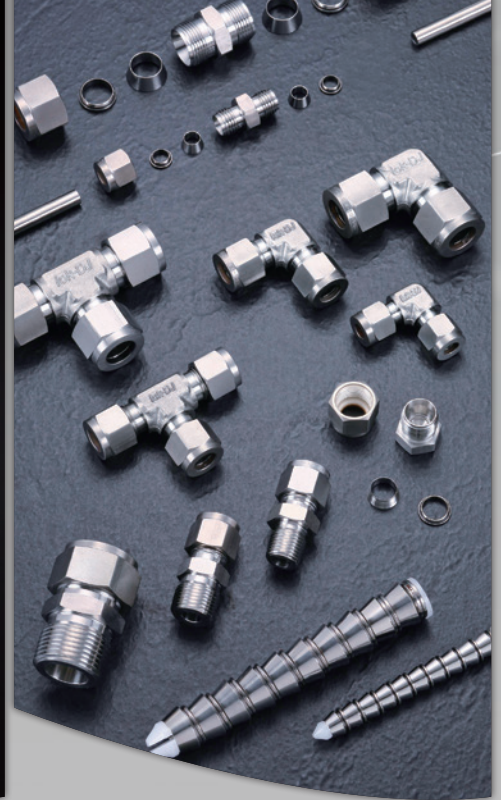
High Purity Pipes & Pipe Fittings



Micro Butt-Welding Fittings



Iok-DJ® Compression Fittings



Metal Gasket Face Seal Fittings



HP Ball Valve



UHP CGA/DISS Fittings Series





### Quality certification

1994: Certified to ISO 9002

1998: Certified to ISO 14001

2002: Certified to ISO 9001 (replacing ISO 9002)

2007: Certified to JIS MARK (JQA JIS B2312) (JQA JIS B2313)

2009: Certified to ISO 9001 : 2008

2013: Certified to JIS MARK (JQA JIS B2309)

2017: Certified to ISO 9001:2015

2020: Certified to NSF/ANSI 61-G

### OUR PRODUCT & SERVICE

1. High Purity Pipe & Pipe Fitting.
2. High Purity Micro Butt-Welding Fittings.
3. High Purity Metal Gasket Face Seal Fittings.
4. UHP CGA/Diss Fittings Series.
5. Compression Fittings.
6. High Purity Ball Valves.
7. Manifold Pipe/Tube.
8. Contract Service: High Purity Welding components (in clean room).
9. Customized electro-polishing and UHP clean service.



### Tachia Yung Ho Machine Industry Co.,Ltd.

UHP Components Business Division

Address: No.51, 39th Road, Taichung Industrial  
Park, Taichung City, Taiwan 407

Tel: 886-4-36000080 Fax: 886-4-36000081

<http://www.yhmco.com.tw>

### 大甲永和機械工業股份有限公司

潔淨級事業部

地址：40768 台中市台中工業區39路51號

電話：886-4-36000080

傳真：886-4-36000081